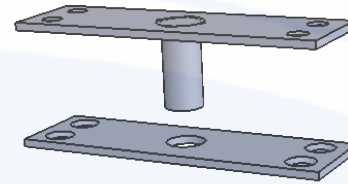
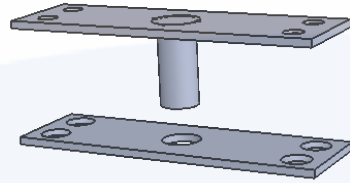
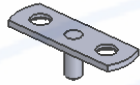
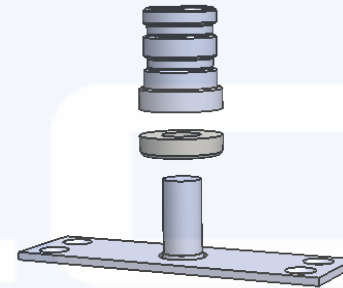
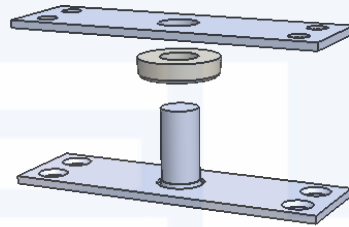
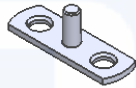


Ensamble superior



Ensamble inferior



Pivote - 17 mm

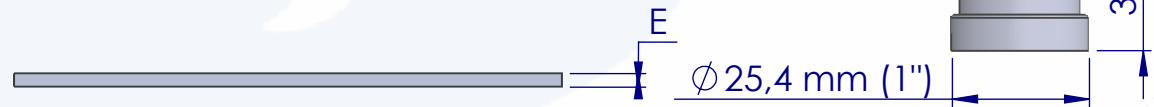
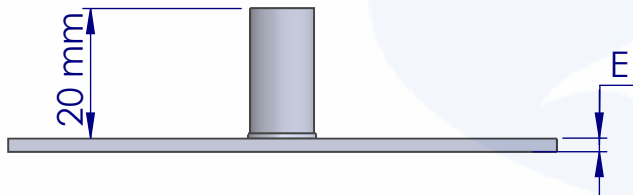
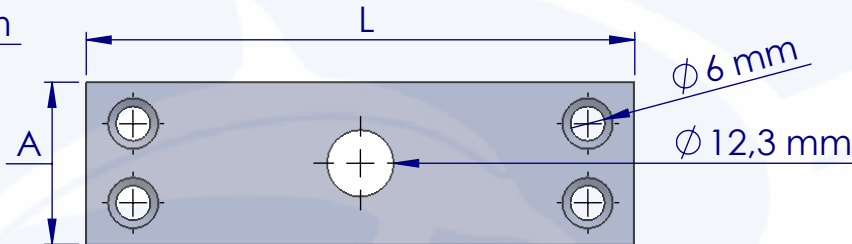
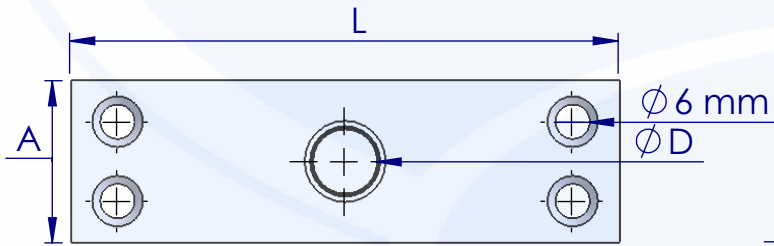
Pivote - 50 mm y 30 mm

Pivote - 70 mm

$\phi 25,6$ mm

$\phi 12$ mm

$\phi 22$ mm (7/8")



Pivote 70 mm	100	30	2,5	12	6	15/32"	12	5
Pivote 50 mm	80	25	2,5	12	6	15/32"	12	5
Pivote 30 mm	64	25	2,5	12	3	15/32"	12	5
Pivote 17 mm	38	12	1,9	14	N/A	3/16"	5	2
REFERENCIA	L - Largo (mm)	A - Ancho (mm)	E - Espesor (mm)	E - Calibre	Eb - Espesor buje (mm)	ϕD - Diametro eje (in)	ϕD - Diametro eje (mm)	N° de piezas X Juego

Nombre de la pieza

PIVOTES



Nombre

Fecha

Material

Proceso

Observaciones

Dibujó

DPÉREZ

09/02/2016

Acero acabado galvanizado

Troquelado

Los bujes son en Nylon

Aprobó

JVÉLEZ

15/02/2016

Unidades

mm / in

